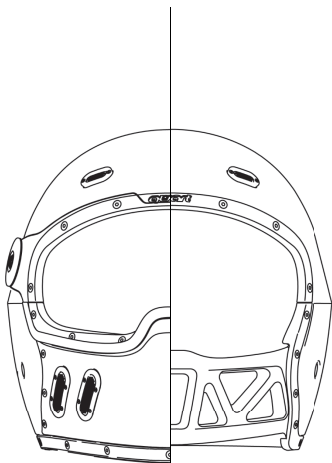


# Maintenance/ /Customization

**quart**



Phoenix C o r e



# Create / Re/create



One of the unique features of Qwart helmets is the high level of customisation that they offer.

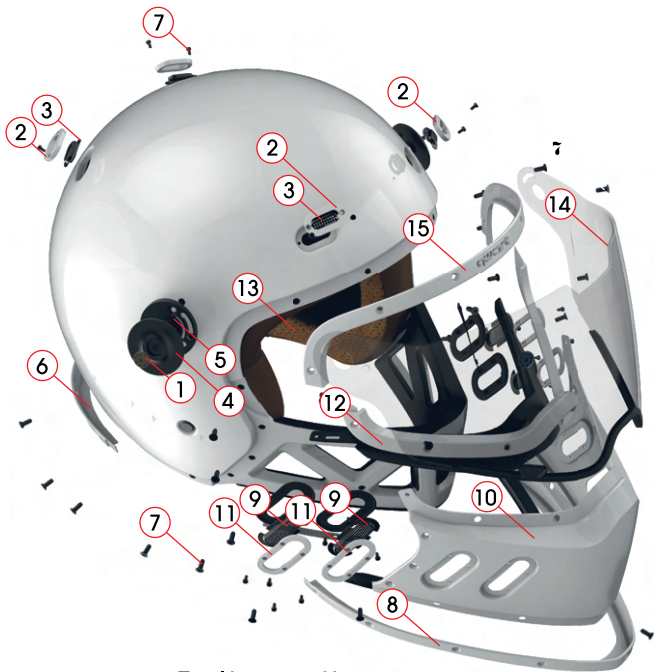
Qwart gives you the option of choosing which look your Phoenix can get, both when you initially purchase it and right throughout its lifetime.

Its modular design also makes it easy to update as the seasons change or to reflect your changing tastes.

The ventilation rims & grids, chin guard cover, border trims, lining, washers and visor can be easily replaced with QWART Alternatives items (Qwart genuine parts).

*Please use a Torx T6 screwdriver to replace the Vents or Grids //  
Hexagon M3 screwdriver to replace the Trims, mask & ratchet //  
Hexagon M4 screwdriver to replace the Visor.*

**IMPORTANT: NEVER USE ANY OTHER ACCESSORIES THAN QWART GENUINE PARTS TO PERSONALISE YOUR HELMET.**



## **Qwart** alternatives™

Before personalizing your helmet and prior to purchase, we recommend you familiarise yourself with all the spare parts references from the Qwart alternatives range (*next page*).

- 1:** Visor's screw ( > SCREW KIT )
- 2:** Vent / *ventilation rim for shell* ( > VENT KIT )
- 3:** Grid / *ventilation grid for shell* ( > GRID KIT )
- 4:** Washer / *visor washer* ( > WASHERS )
- 5:** Ratchet / *visor's mechanism* ( > RATCHET KIT )
- 6:** Trim / *neck trim* ( > TRIM KIT )
- 7:** Screw ( > SCREW KIT )
- 8:** Trim / *chin trim* ( > TRIM KIT )
- 9:** Grid / *ventilation grid for Mask* ( > GRID KIT )
- 10:** Mask / *chin guard cover* ( > MASK )
- 11:** Vent / *ventilation rim for mask* ( > VENT KIT )
- 12:** Trim / *Nose trim* ( > TRIM KIT )
- 13:** Lining / *interior* ( > LINING KIT )
- 14:** Visor ( > VISOR )
- 15:** Trim / *Forehead trim* ( > TRIM KIT )

# quart alternatives™



**TRIM KIT (4pcs)**  
Several colors available



**CONVERTRIMS (2pcs)**  
Side border trims  
Several colors available



**GRID KIT (8pcs)**  
Several colors available



**VENT KIT (8pcs)**  
Several colors available



**MASK**  
Several colors available



**WASHERS (2pcs)**  
Several colors available



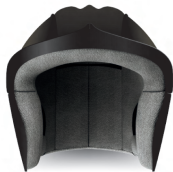
**RATCHET KIT (2pcs)**  
Visor mechanism



**SCREW KIT (12pcs)**  
Mix of screws



**VISOR**



**LINING**  
Several colors available



**CHEEK PADS (2pcs)**  
Several colors available



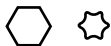
**T TOOL**  
screwdriver

## GET THE APPROPRIATE TOOLS BEFORE PERSONALIZING

A



**T Tool** ( fourni )



or equivalent **M3 Hexagon + Torx T6** screw drivers

B

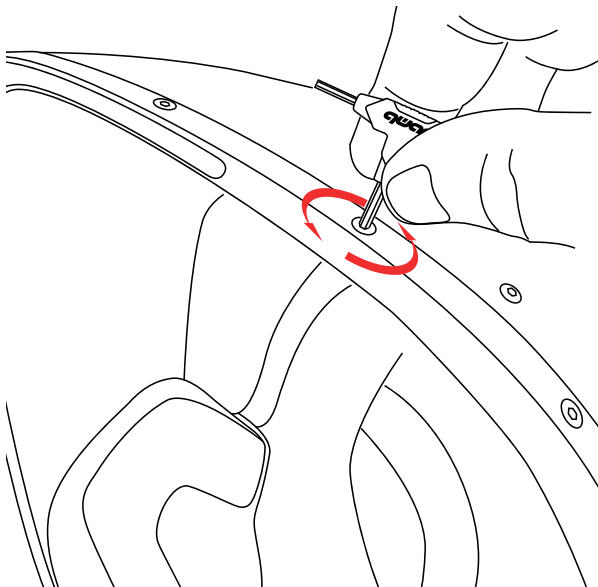
**M4 Hexagon** screw driver ( not provided )



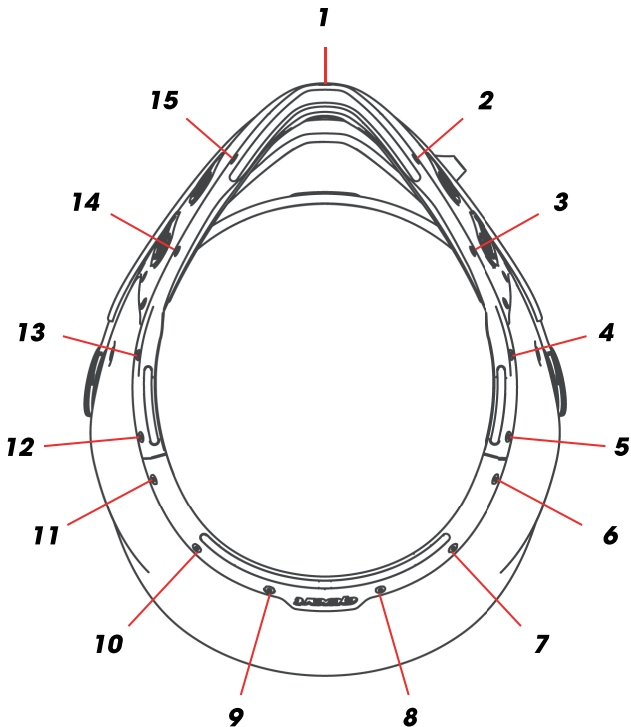
## **HOW TO REPLACE BORDER TRIMS**

To remove/replace the border trims, use a M3 hexagon screwdriver or the QWART «T tool» provided with the helmet to release the screws.

**Please note the position of each screw during disassembly.**







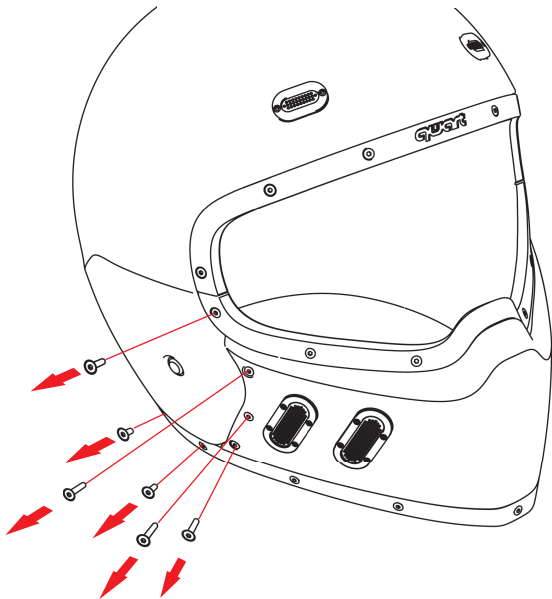
After recording the position of each screw during disassembly, make sure to return each screw to its original position when reinstalling the Trims.



**DO NOT OVERTIGHTEN THE SCREWS  
NOT TO DAMAGE THE FEMALE SCREW INSERTS**

# HOW TO REMOVE/REPLACE THE MASK OR INSTALL THE CONVERTRIMS

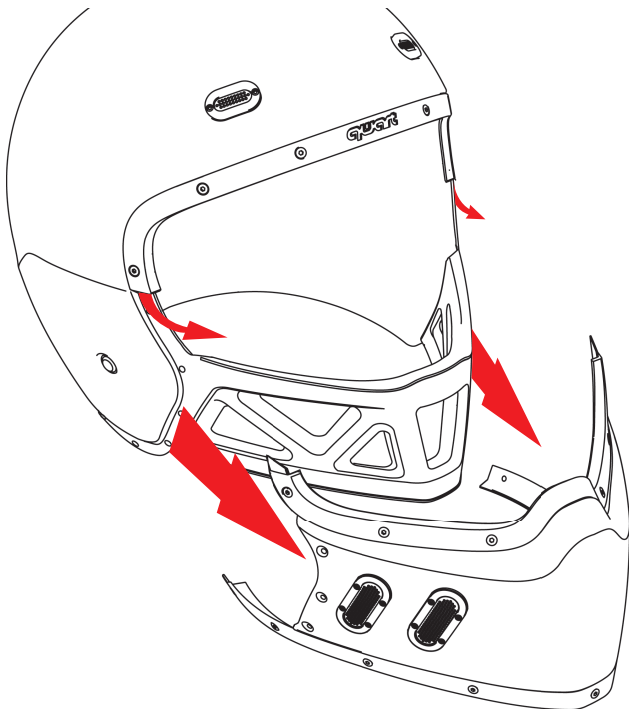
Please note the position of each screw during disassembly.



Please use a M3 hexagon screwdriver or the QWART «T tool» provided with the helmet to release & replace the mask

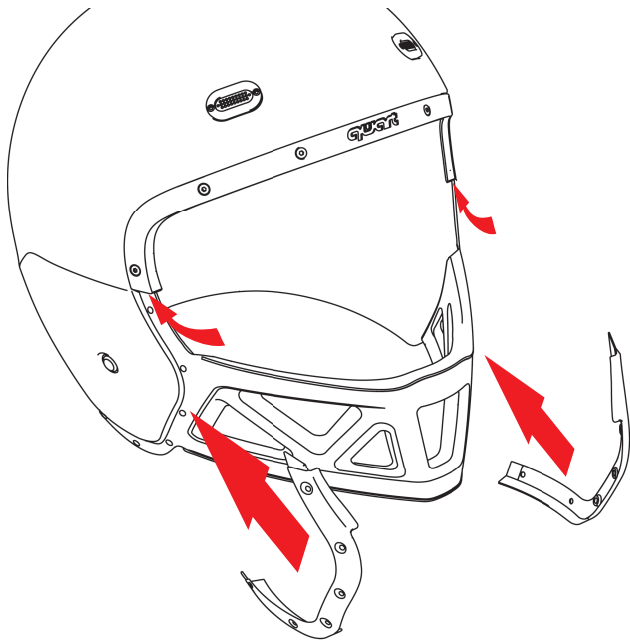
# **HOW TO REMOVE/REPLACE THE MASK OR INSTALL THE CONVERTRIMS**

Once the screws are removed, separate the Mask from the shell as shown below.



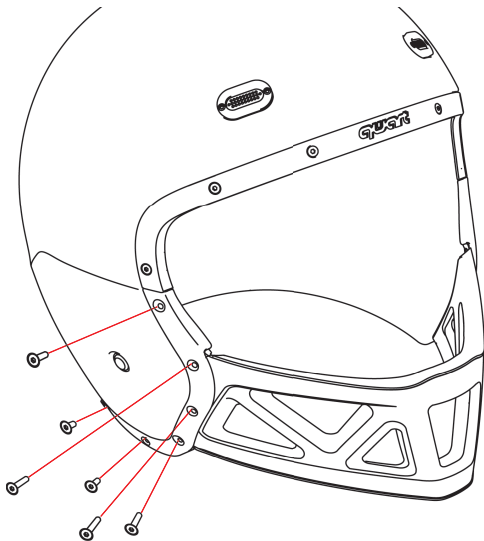
# **HOW TO REMOVE/REPLACE THE MASK OR INSTALL THE CONVERTRIMS**

Install the Convertertrims instead of the Mask as shown below



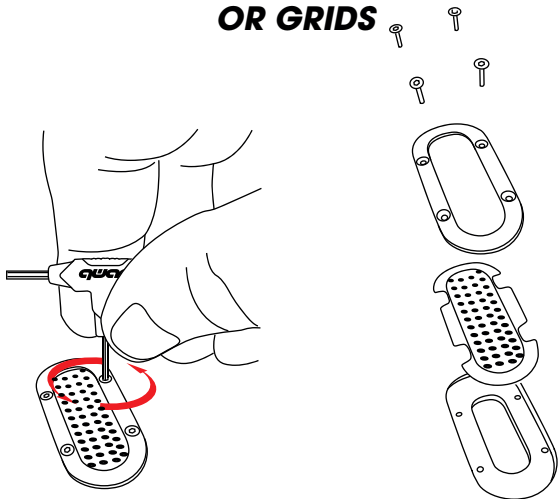
# HOW TO REMOVE/REPLACE THE MASK OR INSTALL THE CONVERTRIMS

Reinstall the screws and tighten them carefully to secure the Convertertrims' position.



**DO NOT OVERTIGHTEN THE SCREWS  
NOT TO DAMAGE THE FEMALE SCREW INSERTS**

# HOW TO REMOVE/REPLACE THE VENTS OR GRIDS



Due to the small size of the screws, make sure the screwdriver fits properly before unscrewing. Use a Torx T6 screwdriver or the «T Tool» (provided with your helmet)

Repeat the operation for each screw and do the other way around to reassemble the new vent or grid.

**Please note that the Mask must be previously removed for any Mask Vent or Mask grid replacement.**

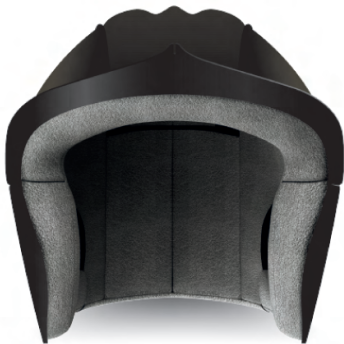


**DO NOT OVERTIGHTEN THE SCREWS  
NOT TO DAMAGE THE FEMALE SCREW INSERTS**

## REMOVABLE LINING

Lining is removable in order to be washed, replaced or just fit your personal taste.

**Please check the instructions below before washing.**



**CAUTION:**

**All linings are not washable.**

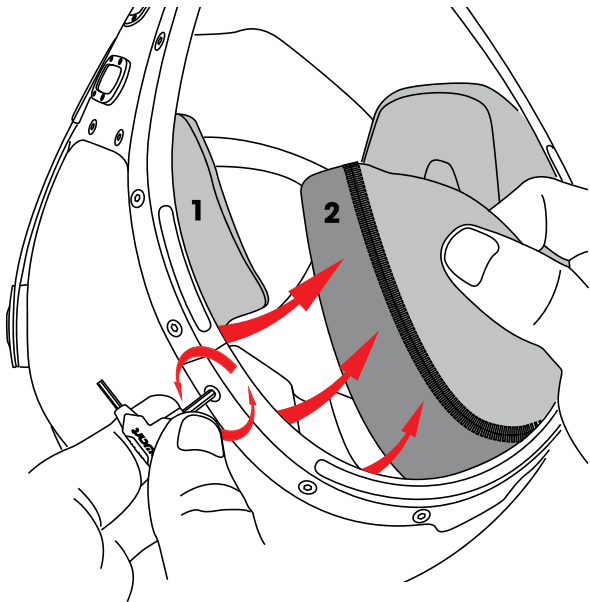
Your helmet may come with a genuine leather lining/interior. Never wash it to prevent damages. Please check maintenance instructions mentioned on lining tag.

## **HOW TO REMOVE/ REPLACE THE LINING**

**1**- Cheek pads are snapped on the sides. Pull on a corner to remove them.

**2**- Lining is held on front and back by two plastic slides (front & back) inserted between the shell and inner EPS.

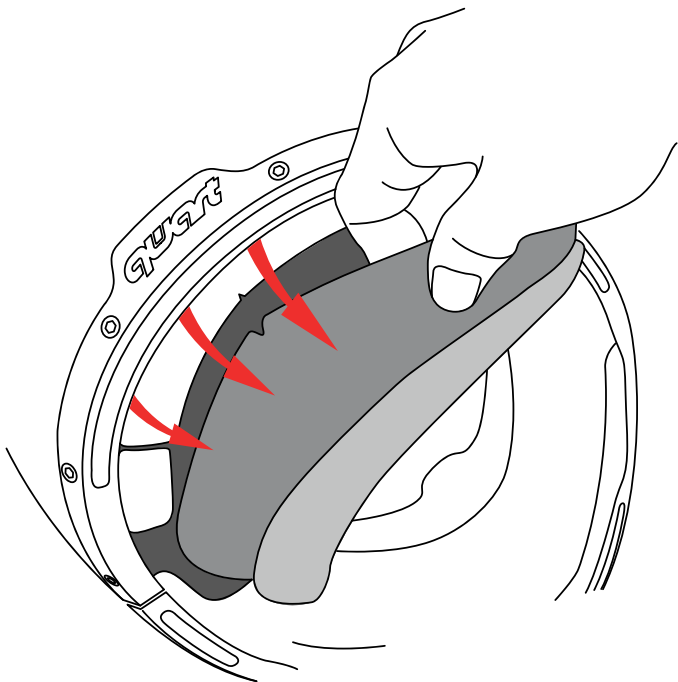
To remove it, just loosen screws a bit and pull on lining as illustrated.



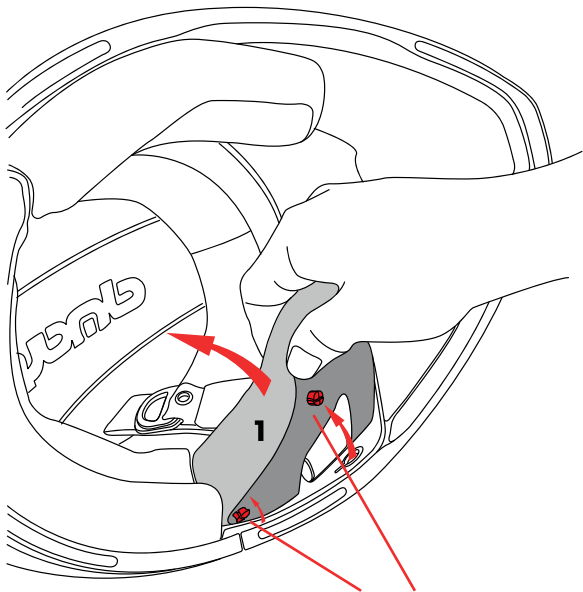


Pull the back tab and remove it from the neck area.  
Repeat the operation on the forehead area to release the front tab and remove the lining completely.

Proceed the other way around to reassemble the lining



## **HOW TO REMOVE/ REPLACE THE CHEEK PADS**

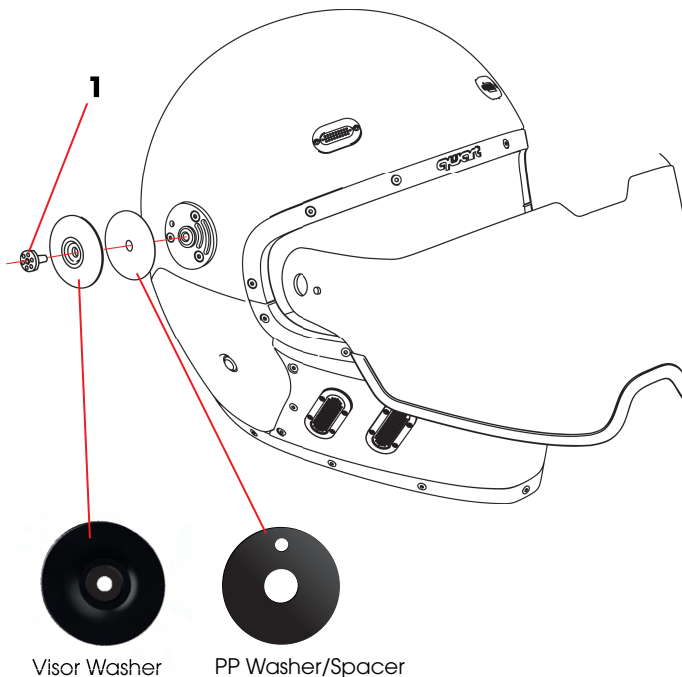


- 1** Cheek pads are snapped on both sides of the helmet. Pull on a corner to release and remove them.

Proceed the other way around to reassemble the cheek pads.

# HOW TO REMOVE OR REPLACE THE VISOR/VISOR WASHER/RATCHET

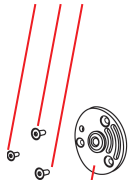
Use a M4 hexagon screwdriver to unscrew #1 and release the visor washer and PP spacer. Repeat the operation on the other side.



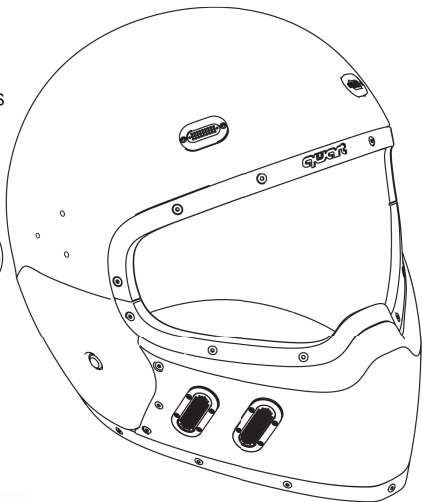
# **HOW TO REMOVE OR REPLACE THE VISOR RATCHET**

Unscrew the 3 hexagon screws to release the ratchet plate and keep the screws aside for later use.  
Repeat the operation on the other side.

Hexagon screws



Ratchet plate



# HOW TO REPLACE RATCHET PLATES WITH SCREW CUPS

After removing the ratchet plates, reuse the hexagon screws to install the screw cups.

Repeat the operation on both sides. Then your helmet comes with a perfect finish and can be used without visor nor ratchet.



**6 Screw cups**  
(provided with your helmet)

***qwart***<sup>®</sup>



[qwartlab.com](https://qwartlab.com)